



## COFI Market Access and SPF Group Newsletter

June 2006 Edition

Download PDF Version 

### COFI Awarded Major Fed/Prov for Fiscal 2006-7

In fiscal 2006-7 COFI/Canada Wood has been awarded approximately \$4.0 million dollars in Canada Wood Export Program (CWEP) and Forestry Innovation Investment (FII) funding to support Canada Wood...[more](#)

## China

### Chinese Fire Regulators Meet With Western Counterparts

In April, fire officials from the Chinese Ministry of Public Security Fire Bureau met in Vancouver with experts from Canada, Europe and the USA as part of the so-called Four Country Fire Initiative. This was the second meeting of these fire experts in the last six months...[more](#)

### Chinese Wood Certifiers Visit Canada To Examine Canadian System

In late March, COFI hosted experts from a number of Chinese government organizations responsible for certification and accreditation, including the Ministry of Construction and China ...[more](#)

### Wood Landscaping and Treated Wood Gaining Popularity in China

Within the last three years, the growth of wood demand for landscaping projects in China has surpassed expectations. In 2002, there were less than 10 domestic treated lumber suppliers in wood landscaping business. Today, there are more than 60 landscaping companies offering ...[more](#)

### 2X4 Design Workshops a Success in China (March 2006)

In March, 2006, Canada Wood delivered 3 full day wood-frame design workshops to more than 200 architects, engineers and government officials interested in wood-frame construction in Beijing, Shanghai and Nanjing...[more](#)

### Canada Wood Website Launches to 80 million Internet Users in China

In March, Canada Wood launched its website for China ( [www.canadawood.cn](http://www.canadawood.cn) ). The website is in English and Chinese and is now reaching potentially 80 million internet users in China...[more](#)

## South Korea

### Canada Wood Opens Korean Office

Canada Wood/COFI has opened an office in South Korea in April, 2006 and has hired two outstanding individuals to manage the large slate of projects this year. Appointed as technical director, Tai Jeong ... [more](#)

### 200 Korean Wood Construction Professionals attend Canada Wood Design Seminar

In an effort to promote multi-story, multi-family wood framed buildings, Canada Wood Korea successfully conducted a technical seminar targeting engineers, architects, and professional wood frame builders on May 23, 2006 at Agricultural Trade Center in Seoul, Korea... [more](#)

### COFI/Canada Wood Donates Building Materials for Hands-on Wood-Frame Construction Course

On June 26, 2006 the Korean Wood Construction Association (KWCA) is launching it's 12 week hands-on carpenter training program in which participants learn how to build a wood-frame house. COFI and the SPF Group... [more](#)

### Wood Buildings a Hit for Korean Forest Service (KFS)

COFI hosted a recent mission of senior Korean Forest Service officials to Vancouver...[more](#)

### Canadian SPF Market Share at Risk in South Korea

There are persistent and increasing complaints in Korea (and China) on Canadian dimension lumber quality. There is an increasing interest in European producers and their general level of quality that seem to have some Korean customers switching from Canadian lumber to European... [more](#)



## Japan

### 2X4 Design Workshops A Success In Japan

In Q4, the SPF Group conducted thirteen technical seminars across Japan in partnership with the Japan 2x4 Home Builders Association and the Japan Wood Truss Council (JWTC)...[more](#)

### COFI hosts Lumber Grading Championship and Japanese JAS Mission

May 25-June 3. COFI hosted A delegation of 12 Japanese wood construction industry experts from Japan. The group toured Parklane and Adera WFC sites in the Vancouver area (Port Moody and Surrey). They also visited COFI's...[more](#)

## COFI Awarded Major Fed/Prov for Fiscal 2006-7

In fiscal 2006-7 COFI/Canada Wood has been awarded approximately \$4.0 million dollars in Canada Wood Export Program (CWEP) and Forestry Innovation Investment (FII) funding to support Canada Wood activities in offshore markets including Japan, China, Korea, Taiwan and Australia. This funding is critical to permit continuation of projects designed to protect existing markets and expand wood usage in key target countries. Generous and expanded support from our fed/prov funders has permitted the opening of a Seoul office. The current five year cycle of the CWEP program comes to an end March 31st 2007 and the industry is urged to lobby both levels of government to provide continued support past this date.



Paul Newman  
Executive Director - Market Access & Trade  
Chairman - Canada Wood Group

[▲ Top ▲](#)



## China

### Chinese Fire Regulators Meet With Western Counterparts

In April, fire officials from the Chinese Ministry of Public Security Fire Bureau met in Vancouver with experts from Canada, Europe and the USA as part of the so-called Four Country Fire Initiative. This was the second meeting of these fire experts in the last six months. Following the first meeting in the fall of 2005 in Beijing, the experts prepared summaries of key fire regulations applicable to wood frame construction in their jurisdictions. During the April meeting the experts compared regulations between the four regions. The intent of this collaborative exercise is to demonstrate what's possible to Chinese authorities and encourage reasonable relaxations in their requirements.

[▲ Top ▲](#)

### Chinese Wood Certifiers Visit Canada to Examine Canadian System

In late March, COFI hosted experts from a number of Chinese government organizations responsible for certification and accreditation, including the Ministry of Construction and China National Certification and Accreditation Administration. These officials met with Canadian counterparts and organizations such as the Canadian Lumber Standards Accreditation Board responsible for product certification schemes used in Canada. The Chinese are planning creation of a wood product certification system for China. Our goal is to assist them to develop a system that will recognize and accept Canadian wood

products for construction uses for minimal cost and requirements.

▲ Top ▲

## Wood Landscaping and Treated Wood Gaining Popularity in China



Within the last three years, the growth of wood demand for landscaping projects in China has surpassed expectations. In 2002, there were less than 10 domestic treated lumber suppliers in wood landscaping business. Today, there are more than 60 landscaping companies offering treated lumber and other wood species. It is estimated that the total treated lumber consumption is between 55,000m<sup>3</sup> to 60,000m<sup>3</sup> for 2005. The 2006 forecast is 80,000m<sup>3</sup> or greater.

Treated wood is being used to replace plastic in outdoor furniture, hardwood in board walks and concrete in fencing. In February, Canada Wood delivered 3 landscape design seminars; Guangzhou, Changsha, and Chongqing. Our objective at these seminars was to teach designers and architects the advantages of using treated SPF in landscape design. The seminars were very well attended (over 300 designers, real estate developers and builders attended the seminars). The keynote speaker for the 3 seminars was Canadian landscape architect Lindsay Gowler from Victoria, BC.

COFI is currently busy preparing a treated wood display which will be exhibiting at the China International Building and Decoration Fair which starts on July 8, 2006.



International Building and Decoration Fair, Guangzhou 2005.

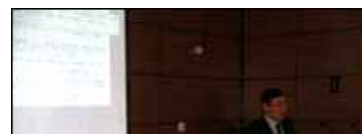
▲ Top ▲

## 2X4 Design Workshops a Success in China (March 2006)

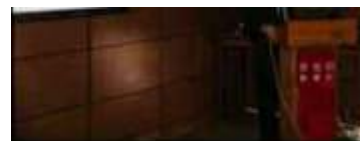
In March 2006, Canada Wood delivered 3 full day wood-frame design workshops to more than 200 architects, engineers and government officials interested in wood-frame construction in Beijing, Shanghai and Nanjing.

In general, the presentations were very technical in nature focusing on state of the art issues in timber engineering and wood building design. The range of topics covered included: wood as a renewable green building material; structural properties of wood, different types of wood products; different types of timber construction; practical examples of Do and Don't in wood frame construction; case studies of buildings in Vancouver illustrating how hybrid 4 storey wood frame over concrete sub-structure and high-end low-rise buildings are designed in Canada; design keys for wood frame construction from the perspective of a leading Canadian consulting office; and Chinese timber code issues.

Questions from the audience were also very technical in nature. This was especially true in Nanjing. These types of questions indicated a high level of



interest in timber engineering from the audience because unless the questioners have some background (either studying the subject or work with the subject in professional practice) they would not be able to pose these questions. Although the number of questioners in Shanghai and Beijing were fewer, several audience members asked high level questions and had discussions directly with individual presenters. Strong interests in the subject were again shown.



Wood Designer Seminar in Shanghai March 2006

▲ Top ▲

## Canada Wood Website Launches to 80 Million Internet Users in China



In March, Canada Wood launched its website for China ( [www.canadawood.cn](http://www.canadawood.cn) ). The website is in English and Chinese and is now reaching potentially 80 million internet users in China, which has the third largest number of internet users after the US and Japan. The website features current projects, wood-frame construction news and a technical area for builders. All promotional and technical literature related to Canada Wood products can also be found under the special download section.

▲ Top ▲



## South Korea

### Canada Wood Opening Korean Office

Canada Wood/COFI has opened an office in South Korea in April 2006, and has hired two outstanding individuals to manage the large slate of projects this year. Appointed as technical director, Tai Jeong has an extensive background in design, construction and technical work connected to the wood products industry. He served the American Forest and Paper Association in Seoul for eight years as technical director and prior to that was university educated in the United States and has degrees in architecture from prestigious schools in New York and Boston. Tai will be responsible for coordinating Canada Wood's activities in Korea. Evelyn Oh, who comes to Canada Wood with strong language and marketing skills, will be responsible for managing Canada Wood's market development activities this year.



Evelyn Oh (Office Manager) and Tai Jeong (Technical Director)

▲ Top ▲

## 200 Korean Wood Construction Professionals attend Canada Wood Design Seminar

In an effort to promote multi-story, multi-family wood framed buildings, Canada Wood Korea successfully conducted a technical seminar targeting engineers, architects, and professional wood frame builders on May 23, 2006 at Agricultural Trade Center in Seoul, Korea.

Given the seismic design requirements from the newly revised Korea National Building Code for a building that is three stories or higher or has an architectural area of 1,000 m<sup>2</sup>, seminar topics focused on structural calculation methods for multi-story, multi-family wood framed buildings and seismic design using metal connectors.

The seminar presented by three speakers including Mr. Tai Jeong, Technical Director of Canada Wood Korea, Mr. Matt Stafford of Weyerhaeuser Asia and Mr. Jeff Ellis of Simpson Strong-Tie Co.. Mr. Stafford made a presentation on structural design and the considerations for multi-family wood framed buildings. Mr. Ellis made a presentation on wood design, connector and lateral systems. And finally, Mr. Jeong made a presentation on wood structural related building codes and application of WoodWorks Design Office software program.

200 copies of Canadian technical literature, the Guide to Good Practice, were handed out to those who attended to the seminar. The overall response to the seminar was very positive and participants expressed appreciation for the good instruction. Many participants also expressed a desire for Canada Wood to continuing to conduct technical transfer initiatives such as design workshops and seminars.



▲ Top ▲

## COFI/Canada Wood Donates Building Materials for Hands-on Wood-Frame Construction Course

On June 26, 2006, the Korean Wood Construction Association (KWCA) is launching its 12 week hands-on carpenter training program in which participants learn how to build a wood-frame house. COFI and SPF Group members proudly donated \$13,000 worth of materials for the training structure. At the completion of the course, the home will be donated to a Korean orphanage.

▲ Top ▲

## Wood Buildings a Hit for Korean Forest Service (KFS)

COFI hosted a recent mission of senior Korean Forest Service officials to Vancouver. The purpose of the trip was to learn about Canadian forestry and wood products management system and government policies, any regulatory and quality control issues and systems. They also wished to learn about wood frame buildings being built in forest lands for recreational and lodging purposes. Itinerary included site visits to wood buildings in Whistler, Victoria, Nanaimo and Tofino as well as a trip to Pender Harbour where the group was given a tour of active harvesting sites. The South Korean government is planning to construct many wood lodging and recreational facilities in their national park lands. Response to the trip was excellent and has already resulted in definite plans to build two large wood recreational facilities in Korean national parks.





▲ Top ▲

## Canadian SPF Market Share at Risk in South Korea

Canada Wood Group staff has been receiving persistent and increasing complaints in Korea (and China) about Canadian dimension lumber quality. This is occurring at the same time as European producers are taking a hard look at both markets. We understand that many Asian users of lumber are impressed with the general level of European quality and some Korean customers have reportedly switched from Canadian lumber to European. Sources in South Korea now reveal that Canadian share of the dimension lumber has eroded to less than the 50% level as European lumber gains in popularity. This is a disturbing trend that we will have to monitor carefully. Canadian producers are advised to listen closely to their agents and market representatives.



▲ Top ▲

## Japan

### 2X4 Design Workshops a Success in Japan

In Q4, the SPF Group conducted thirteen technical seminars across Japan in partnership with the Japan 2x4 Home Builders Association and the Japan Wood Truss Council (JWTC). Total attendance for these thirteen seminars was 562 participants, an average of 43 participants per seminar. Seminar locations ranged from Miyazaki city (Kyushu) in the south to Kushiro city (Hokkaido) in the North. Seminar topics included 2x4 planning & design, Truss & Engineered Wood use and the fireproof specification for 2x4 structures.

COFI /Canada Wood and the WHA will continue the fire test program with the objective of receiving fireproof ministerial approval by the end of the current fiscal year.



▲ Top ▲

## COFI Hosts Lumber Grading Championship and Japanese JAS Mission

May 25-June 3. COFI hosted a delegation of 12 Japanese wood construction industry experts from Japan. The group toured Parklane and Adera WFC sites in the Vancouver area (Port Moody and Surrey). They also visited COFI's northern location in Prince George where the group enjoyed forestry and mill tours. The highlight of their trip was attending and competing in COFI's annual lumber grading Championship which took place on Sat May 27, 2006 in Kelowna.

▲ Top ▲

## Recent Publications

### Reports



Opportunities for Wood  
Curtain Walls in Chinese  
Construction  
[Click to see table of  
contents](#)



Noise Technical Brochure  
[Click to see introduction](#)

### Case Studies



Case Study I  
[Dream Home Canada](#)



Case Study II  
[CAF Light Wood Frame](#)

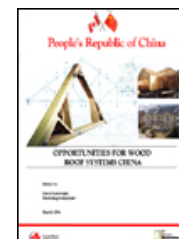
[▲ Top ▲](#)

## Other Publications

### Opportunities for wood roof systems China

Currently, the Chinese government is promoting the design of pitched roofs to beautify the skyline as well as eliminate some of the leaky roof problems with associated flat roofs. This study examines the opportunities for the wood truss system in China. The report also includes a cost analysis of setting up a truss factory in China.

[Click to see table of contents](#)



### Opportunities for the use of solid wood products in traditional structures and applications

Hemlock for concrete forms, sub-floors and interior decorating are a few of the markets identified. Restoration of historical sites is also examined and shows a potential for timbers and larger sized lumber products as well as cedar products.

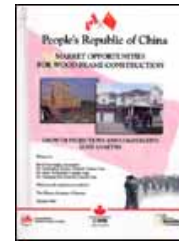
[Click to see table of contents](#)



### Market opportunities for wood-frame construction (Growth projections and comparative cost analysis)

This study examines the viability of wood-frame construction in China and provides an interesting cost analysis that compares the cost difference of building a reinforced concrete house vs. the same house using the 2X4 wood-frame system.

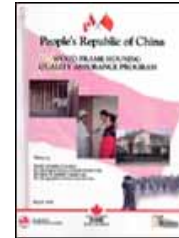
[Click to see table of contents](#)



### Wood-Frame Housing Quality Assurance Program

This report lays out the necessary steps to implement a wood-frame quality assurance program in China by looking at the existing systems in China and comparing them to those in Canada.

[Click to see table of contents](#)



### China: Guide to Good Practice

"How To" Guide for building a wood frame house in China which incorporates local building codes and regulations.

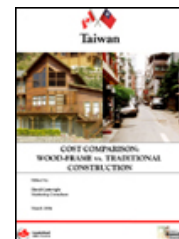


### Taiwan

#### Cost Comparison: Wood-frame vs. traditional construction

This study examines the viability of wood-frame construction in Taiwan and provides an interesting cost analysis that compares the cost difference of building a reinforced concrete house vs. the same house using the 2X4 wood-frame system.

[Click to see table of contents](#)



### South Korea

#### Opportunities and prospects for the use of wood in residential and non-residential construction (light wood frame, heavy timber, wood building components)

A number of demographic and socio-economic market forces and government policies are driving South Korea's ever-increasing use of wood construction and the growing demand for solid wood products, wood building components and finishing products there. This report identifies the prospects for the use of wood in residential and non-residential construction, light wood frame construction, heavy timber structures, other wood building components, as well as secondary wood products for interior and exterior furnishings.

[Click to see table of contents](#)



### South Korea: Guide to Good Practice

"How To" Guide for building a wood frame house in China which incorporates local building codes and regulations.





If you would like to obtain any of the publications listed above,  
please contact Wayne Iversen [iversen@cofi.org](mailto:iversen@cofi.org)

▲ Top ▲

## Contact Information COFI / SPF / Canada Wood Market Access Staff

### Vancouver

Council of Forest Industries  
1501 – 700 West Pender Street  
Pender Place 1 Business Building  
Vancouver, BC  
V6C 1G8  
Phone: (604) 684-0211 – Fax: (604) 687-4930  
Market Access Administration - Maureen Elliott: [elliott@cofi.org](mailto:elliott@cofi.org)



**Paul J. Newman**  
Executive Director - Market  
Access and Trade  
Chairman - Canada Wood Group  
Direct Phone: (604) 891-1215  
Email: [newman@cofi.org](mailto:newman@cofi.org)



**Wayne Iversen**  
Program Manager – Emerging Markets  
Direct Phone: (604) 891-1216  
Email: [iversen@cofi.org](mailto:iversen@cofi.org)

### Tokyo

Council of Forest Industries / Canada Wood  
Tomoecho Annex – 11 9F  
3-8-27 Toranomom, Minato ku  
Tokyo 105-0001  
Japan  
Phone: 813-5401-0531 – Fax: 813-5401-0538



**David Litchfield**  
Director  
Email: [Litchfield@cofi.org](mailto:Litchfield@cofi.org)



**Hidehiko Fumoto**  
Asst. Director  
Email: [Fumoto@cofi.org](mailto:Fumoto@cofi.org)



**Kevin Bews**  
SPF Manager  
Email: [bews@canadawood.jp](mailto:bews@canadawood.jp)



**Yuri Kazamatsuri**  
Office Manager  
Email: [Kazamatsuri@cofi.org](mailto:Kazamatsuri@cofi.org)

**China****Shanghai**

Council of Forest Industries / Canada Wood  
 9G29 & 9G 31, Shanghai Mart,  
 2299 Yanan Road (West),  
 Shanghai, 200336  
 PRC  
 Phone: 86-21 6236-2526 – Fax: 86-21 6236-2536

**Jennifer Yu**

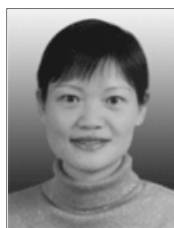
Project Director - China  
 Email: [yu@cofi.org](mailto:yu@cofi.org)

**Elaine Cheng**

Marketing Assistant  
 Email: [cheng@canadawood.cn](mailto:cheng@canadawood.cn)

**Beijing**

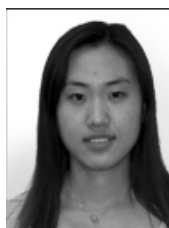
Council of Forest Industries / Canada Wood  
 Suite 12B10 – Han Wei Plaza  
 No. 7 – Guanghua Road  
 ChaoYang District  
 Beijing 100004  
 PRC  
 Phone: 86-10-65611041 – Fax: 86-10-65611037

**Haiyan Zhang**

Technical Director  
 Email: [zhang@cofi.org](mailto:zhang@cofi.org)

**Leonard Mao**

SPF Manager Beijing  
 Email: [mao@cofi.org](mailto:mao@cofi.org)

**Vicky Wu**

Office Manager  
 Email: [wu@canadawood.cn](mailto:wu@canadawood.cn)

**Taipei**

Canada Wood  
 c/o BC Representative Office  
 7G03 7Fl., No. 5, Hsin-Yi Rd, Sec. 5, Taipei Taiwan  
 P.O. Box No. 109-857  
 Phone (886-2)2722-0805 - Fax (886-2)2723-9364

**Michael Craddock**

Snr. Advisor COFI / Canada Wood  
 E-mail: [mcraddoc@bcrotaiwan.org](mailto:mcraddoc@bcrotaiwan.org)

**Carrie Pederson**

Special Advisor COFI / Canada Wood  
 E-mail: [trade@bcrotaiwan.org](mailto:trade@bcrotaiwan.org)

**South Korea**

Canada Wood

4th Fl, Shinhan Bldg., 128-4 Nonhyon-Dong, Kangnam-Gu

Seoul , Korea 135-010

Phone: 82-2-3445-3834

Fax: 82-2-3445-3832



**Mr. Tai Jeong**

Technical Director

Email: [jeong@canadawood.or.kr](mailto:jeong@canadawood.or.kr)



**Evelyn Oh**

Office Manager

Email: [oh@canadawood.or.kr](mailto:oh@canadawood.or.kr)

▲ Top ▲

---

COPYRIGHT 2006 COUNCIL OF FOREST INDUSTRIES - ALL RIGHTS RESERVED